



**Country Garden Holdings Company Limited** (“Country Garden” or the “Group”, stock code: 2007) is one of China’s leading integrated property developers. The Group runs a centralized and standardized management system, with business comprising construction, installation, fitting, project development, property management, as well as hotel development and management. In addition, “Country Garden” has been named by the PRC State Administration for Industry and Commerce as “China’s Well-known Trademark” in the property sector. Country Garden was ranked the Top Tax Paying Private Enterprise in China by the State Administration of Taxation in 2006. The Company became a constituent stock of MSCI Global Standard Indices on 1 September 2007. It also became a constituent stock of Hang Seng Composite Index 200 and Hang Seng Mainland Composite Index on 10 September 2007, as well as a constituent stock of Hang Seng China 50 Index on 30 June 2008.

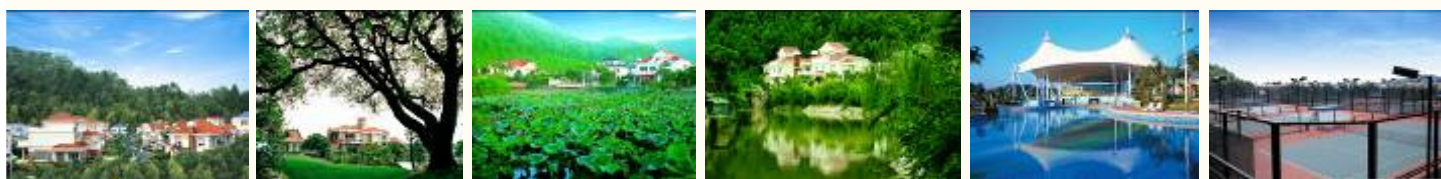
#### **LATEST NEWS**

- As of 30 April 2009, the attributable gross floor area (not site area, same as below) with land use right certificates is approximately 43.78 million sq. m. (excluding those GFA of which relevant sales contracts were signed but the application of land use right certificates is in progress). Among which, the attributable GFA with construction permits is around 13.52 million sq. m. The Group has completed the master planning of projects with attributable GFA of approximately 6.13 million sq. m., and has submitted the application for the construction permits to related authorities.
- The Group’s contract sales in April 2009 amounted to approximately RMB1.1 billion, representing a y-o-y growth of 23%. The contract sales in terms of GFA was approximately 240,000 sq. m., representing a y-o-y growth of 55%.
- The total contract sales for the first four months of 2009 amounted to approximately RMB4.65 billion, posting a y-o-y increase of 15%. The contract sales in terms of GFA was approximately 990,000 sq. m., representing a y-o-y growth of 43%.



**Breakdown by Development Status for Attributable GFA of Property Development with Land Use Rights (as of 30 April 2009)**

Development Status Details	GFA ('000 sq. m.)
<b>GFA completed and pre-sold but not yet delivered (not site area)</b> - The total GFA of properties completed and pre-sold but have not yet reached the delivery date as stipulated in the respective sales and purchase contract	700
<b>GFA completed but unsold (not site area)</b> - The total GFA of properties completed but unsold	860
<b>Saleable GFA with construction permit obtained (not site area)</b> - The total GFA with construction permit obtained, a portion of which already met pre-sale conditions - Some of these saleable GFA were actually pre-sold	13,520
<b>GFA under approval for construction permits (not site area)</b> - Land use right certificates obtained - Master planning, construction design and tender for construction completed with relevant documents submitted to government departments pending on construction approval. Once approved, construction will commence immediately	6,130
<b>GFA in the process of master planning (not site area)</b> - Land use right certificates obtained with master planning underway - Upon completion of planning (e.g. master planning), relevant documents will be submitted to government departments for construction approval	22,570
<b>Total</b>	<b>43,780</b>



Properties Under Development (as of 30 April 2009)

Project	City (District)	Aggregate GFA for the entire project (sq. m.)	Interest attributable to the Group (%)	GFA under development (sq. m.)	Total saleable GFA under development (sq. m.)	Actual construction commencement date	Total saleable GFA presold (sq. m.)	Actual/ *Estimated pre-sale commencement date	Estimated completion date
Shawan Country Garden	Guangzhou (Panyu)	277,562	100	156,265	151,236	25/7/2007	148,749	17/1/2008	4Q2009
Huanan Country Garden (Phase 1-5 & 7)	Guangzhou (Panyu)	1,010,229	100	65,072	30,107	27/5/2005	3,774	20/11/2008	2Q2010
Country Garden Phoenix City	Guangzhou (Zengcheng)	4,929,495	100	260,286	240,423	29/4/2007	75,328	30/4/2008	4Q2011
Huanan Country Garden (Phase 6)	Guangzhou (Panyu)	423,467	50	1,076	0	15/10/2004	0	—	4Q2009
Nansha Country Garden	Guangzhou (Nansha)	508,521	100	258,296	254,532	29/1/2007	234,074	22/11/2007	4Q2009
Holiday Islands - Huadu	Guangzhou (Huadu)	576,971	100	305,959	298,804	11/5/2006	2,018	25/7/2008	2Q2012
Shunde Country Garden (incl. Country Garden West Court)	Foshan (Shunde)	2,426,565	100	298,489	161,090	28/11/2006	11,598	29/11/2006	4Q2010
Gaoming Country Garden	Foshan (Gaoming)	1,006,591	100	526,221	522,419	31/5/2006	66,865	10/7/2008	3Q2011
Nanhai Country Garden	Foshan (Nanhai)	571,358	100	131,024	129,974	8/3/2006	63,772	24/11/2008	4Q2010
Heshan Country Garden	Jiangmen (Heshan)	2,090,296	100	392,728	342,345	22/3/2007	116,967	13/9/2007	4Q2010
Wuyi Country Garden	Jiangmen (Pengjiang)	688,605	100	21,502	21,442	29/4/2007	10,406	25/12/2007	4Q2009
Xinhui Country Garden	Jiangmen (Xinhui)	581,477	100	188,742	187,809	18/10/2007	0	2Q2009*	4Q2010
Taishan Country Garden	Jiangmen (Taishan)	2,674,908	100	664,395	659,283	31/3/2006	9,800	30/8/2007	4Q2011
Yangdong Country Garden	Yangjiang (Yangdong)	388,771	100	16,241	16,241	31/5/2006	10,165	17/9/2008	4Q2009
Zhaoqing Lanling Residence	Zhaoqing (Gaoxin)	186,144	100	49,211	5,033	30/1/2007	0	1Q2010*	2Q2009
Zhaoqing Country Garden	Zhaoqing (Gaoyao)	367,717	51	59,452	58,791	19/9/2006	4,869	20/4/2007	4Q2009
Shaoguan Country Garden	Shaoguan (Zhenjiang)	2,497,851	100	710,365	701,643	17/1/2007	21,937	29/9/2007	4Q2012
Huiyang Country Garden	Huizhou (Huiyang)	914,554	90	797,171	787,776	22/8/2007	37,608	24/9/2008	4Q2011
Lechang Country Garden	Shaoguan (Lechang)	427,761	100	134,597	134,597	23/10/2007	8,079	21/10/2008	4Q2011
Shaoguan Country Garden – Sun Palace	Shaoguan (Xilian)	3,831,295	100	96,204	91,486	10/3/2008	0	3Q2009*	2Q2011
Enping Country Garden	Jiangmen (Enping)	366,686	100	116,597	115,124	13/12/2007	0	2Q2009*	4Q2010
Shanwei Country Garden	Shanwei (Shanwei)	398,200	100	66,757	66,757	1/9/2008	0	3Q2009*	2Q2010
Yangshan Country Garden	Qingyuan (Yangshan)	263,697	100	19,693	17,484	1/12/2008	0	3Q2009*	4Q2010
Maoming Country Garden	Maoming (Maonan)	303,535	100	29,220	23,366	4/3/2009	0	3Q2009*	3Q2010

(Continued Next Page) 3

碧桂園

给您一个五星级的家



**Properties Under Development (as of 30 April 2009)**

Project	City (District)	Aggregate GFA for the entire project (sq. m)	Interest attributable to the Group (%)	GFA under development (sq. m)	Total saleable GFA under development (sq. m)	Actual construction commencement date	Total saleable GFA presold (sq. m)	Actual/ *Estimated pre-sale commencement date	Estimated completion date
Changsha Country Garden	Changsha (Changsha)	1,292,886	100	110,330	110,089	28/12/2006	4,369	15/1/2009	3Q2010
Country Garden – Hill Lake Palace	Changsha (Ningxiang)	268,552	100	202,215	175,798	12/11/2007	51,491	14/10/2008	2Q2010
Taizhou Country Garden	Taizhou (Haining)	972,618	100	346,499	343,629	27/6/2007	88,722	28/12/2007	3Q2010
Manzhouli Country Garden	Hulunbeier (Manzhouli)	3,384,294	100	376,041	371,190	23/7/2007	4,406	20/9/2008	4Q2011
Xing'anmeng Country Garden	Xing'anmeng (Keyouqianqi)	941,595	100	427,772	424,872	20/9/2007	5,700	23/8/2008	4Q2012
Tongliao Country Garden	Tongliao (Keerqin)	1,620,350	100	564,952	562,048	3/11/2007	17,244	20/8/2008	4Q2013
Changshou Country Garden	Chongqing (Changshou)	463,040	100	331,772	314,372	5/11/2007	48,612	25/4/2008	4Q2011
Wuhan Country Garden	Wuhan (Hannan)	509,185	100	472,098	454,359	28/12/2007	89,771	4/6/2008	4Q2013
Xianning Country Garden	Xianning (Xianan)	637,730	100	272,363	251,755	15/1/2008	31,381	24/6/2008	2Q2011
Suizhou Country Garden	Suizhou (Chengnan)	1,416,666	100	289,682	286,467	21/5/2008	40,736	12/7/2007	2Q2011
Jingmen Country Garden	Jingmen (Duodao)	135,084	100	37,236	37,236	15/1/2009	0	2Q2009*	3Q2010
Country Garden – Sun Palace	Shenyang (Daoyi)	797,752	100	600,124	593,857	21/7/2007	69,480	30/7/2008	2Q2012
Shenyang Country Garden	Shenyang (Huashan)	522,199	100	291,234	288,331	21/7/2007	122,466	3/6/2008	4Q2010
Country Garden – Phoenix City	Shenyang (Sujiatun)	1,320,842	100	1,294,400	1,189,102	24/9/2007	125,802	19/7/2008	2Q2013
Country Garden – Galaxy Palace	Shenyang (Yuhong)	1,848,805	100	581,808	577,483	19/3/2008	73,625	18/7/2008	4Q2013
Haicheng Country Garden	Liaoning (Haicheng)	610,231	100	447,956	444,586	25/10/2007	0	3Q2009*	4Q2011
Country Garden – Lakeside City	Chaohu (Zhongmiao)	927,780	100	430,082	359,878	13/12/2007	93,286	10/7/2008	3Q2010
Huangshan Country Garden	Huangshan (Huangshan)	385,585	100	206,172	200,276	6/1/2008	33,668	29/8/2008	4Q2011
Chizhou Country Garden	Chizhou (Chizhou)	440,198	100	207,710	194,697	27/1/2008	12,196	28/9/2008	2Q2010
Chaohu Country Garden	Chaohu (Nan'an)	593,464	100	118,609	115,127	23/4/2008	28,680	15/11/2008	3Q2010
Country Garden – Hill Lake City	Chaohu (Hexian)	2,168,515	100	322,904	318,852	9/5/2008	0	3Q2009*	4Q2010
Wuhu Country Garden	Wuhu (Sanshanqu)	2,594,058	100	552,275	550,143	6/6/2008	51,194	20/9/2008	2Q2012
Anqing Country Garden	Anqing (Anqing)	1,591,047	100	174,311	171,335	19/6/2008	57,687	30/10/2008	2Q2010
Suihua Country Garden	Suihua (Beilin)	271,600	100	271,600	271,007	25/9/2008	6,496	28/9/2008	4Q2011
<b>Total attributable GFA</b>					<b>13,516,666</b>				



**Details of the 10 Hotels in Operation and 9 Hotel Projects under Construction  
(as of 30 April 2009)**

Hotel Name	Location	Actual/Estimated* Opening Date	No. of Rooms	Star-rating <sup>(1)</sup>
Shunde Country Garden Holiday Resort	Shunde Country Garden	Feb 2000	152	4-star (in operation)
Guangzhou Country Garden Phoenix City Hotel	Country Garden – Phoenix City	Nov 2003	573	5-star (in operation)
Qingyuan Country Garden Holiday Islands Hotel	Qingyuan Holiday Islands Country Garden	Dec 2004	201	5-star (in operation)
Heshan Country Garden Phoenix City Hotel	Heshan Country Garden	July 2005	280	5-star (in operation)
Wuyi Country Garden Phoenix Hotel	Wuyi Country Garden	Dec 2005	95	5-star rating standard (in operation)
Yangjiang Country Garden Phoenix Hotel	Yangdong Country Garden	May 2007	342	5-star rating standard (in operation)
Changsha Venice Palace Hotel	Changsha Country Garden	Oct 2007	343	5-star rating standard (in operation)
Taishan Country Garden Phoenix Hotel	Taishan Country Garden	Dec 2007	337	5-star rating standard (in operation)
Zhaoqing Country Garden Phoenix Hotel	Zhaoqing Country Garden	Feb 2009	285	5-star rating standard (in operation)
Xinhui Country Garden Phoenix Hotel	Xinhui Country Garden	Mar 2009	374	5-star rating standard (in operation)
Suizhou Country Garden Phoenix Hotel	Suizhou Country Garden	May 2009*	378	5-star rating standard (under construction)
Gaoming Country Garden Phoenix Hotel	Gaoming Country Garden	Sept 2009*	337	5-star rating standard (under construction)
Anqing Country Garden Phoenix Hotel	Anqing Country Garden	Sept 2009*	334	5-star rating standard (under construction)
Wuhu Country Garden Phoenix Hotel	Wuhu Country Garden	2009*	602	5-star rating standard (under construction)
Chongqing Country Garden Phoenix Hotel	Changshou Country Garden	2010*	336	5-star rating standard (under construction)
Wuhan Country Garden Phoenix Hotel	Wuhan Country Garden	2010*	334	5-star rating standard (under construction)
Chaohu Country Garden La Phoenix Hotel	Country Garden – Lakeside City	2010*	337	5-star rating standard (under construction)
Chaohu Country Garden Le Phoenix Hotel	Chaohu Country Garden	2010*	336	5-star rating standard (under construction)
Huangshan Country Garden Phoenix Hotel	Huangshan Country Garden	2010*	376	5-star rating standard (under construction)

Notes:

Hotels are only allowed to apply for star rating after one year of operation.